



# GAT MONTHLY MEMBERSHIP PROGRESS REPORT

Results as of: 4/30/2023

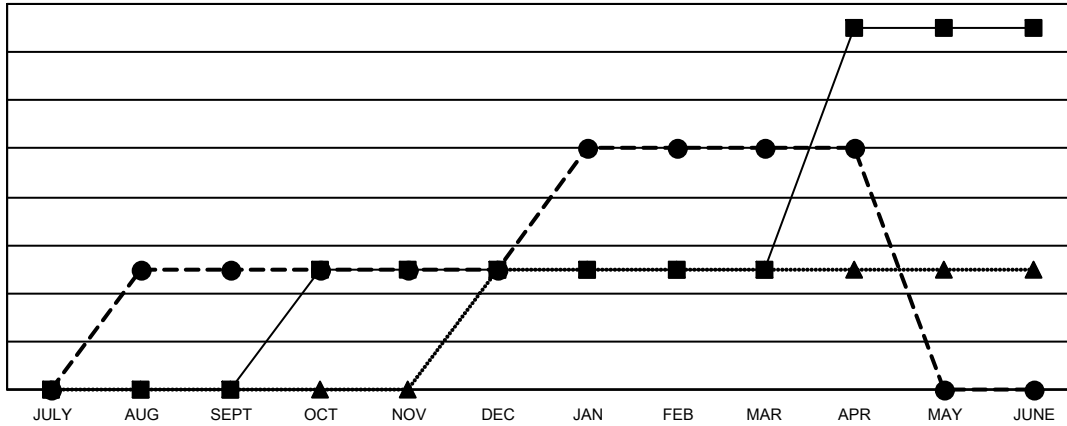
Multiple District 22

LOCATION: MARYLAND

Clubs			
RESULTS FOR 2022-2023			
QUARTER	NEW CLUB GOAL	NEW CLUBS	DROPPED CLUBS
JULY/AUG/SEPT	0	1	0
OCT/NOV/DEC	1	0	2
JAN/FEB/MAR	0	1	0
APR/MAY/JUNE	2	0	0

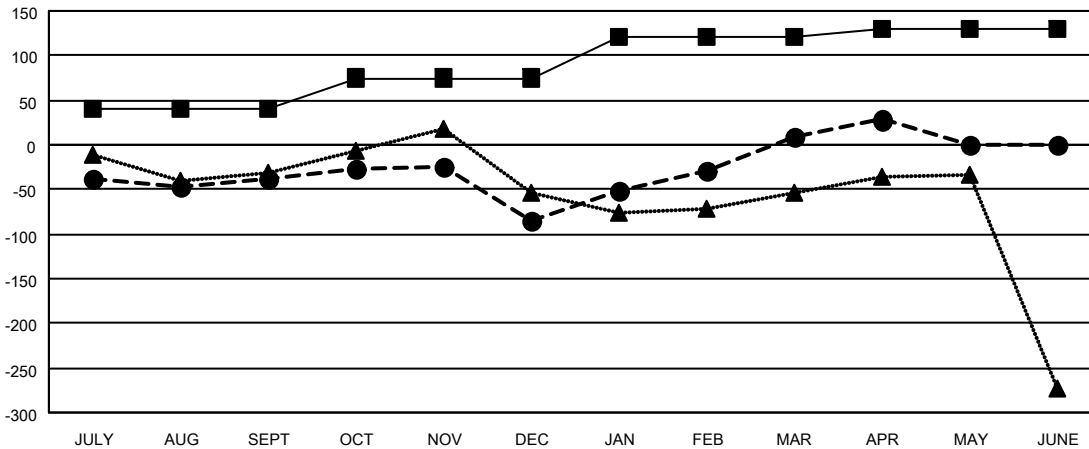
Members			
RESULTS FOR 2022-2023			
QUARTER	MEMBER GROWTH NET GOAL	MEMBER GROWTH ACTUAL	DROPPED MEMBERS ACTUAL (including transfers)
JULY/AUG/SEPT	40	149	159
OCT/NOV/DEC	35	136	175
JAN/FEB/MAR	45	233	121
APR/MAY/JUNE	10	50	24

GOALS AND ACTUAL NEW CLUBS CUMULATIVE



- CURRENT YEAR GOALS FOR NEW CLUBS
- CURRENT YEAR ACTUAL NEW CLUBS
- ▲- LAST YEAR ACTUAL NEW CLUBS

GOALS AND ACTUAL MEMBERS CUMULATIVE



- MEMBER GROWTH NET GOAL
- MEMBER GROWTH ACTUAL
- ▲- LAST YEAR MEMBERSHIP ACTUAL

DROPPED CLUBS: 2	115 CLUBS OF 200 ADDED 1 OR MORE NEW MEMBERS	<b>GENDER DISTRIBUTION</b>
<b>DROPPED MEMBERS</b>	<a href="#">CLICK HERE FOR CUMULATIVE MEMBERSHIP DATA</a>	MALE 3,625 (62.45%)
DECEASED 87		FEMALE 2,180 (37.55%)
CLUB CANCELLED 28		NON BINARY 0 (0.00%)
OTHER 364		PREFER NOT TO ANSWER 0 (0.00%)
<b>TOTAL 479</b>		<b>TOTAL FAMILY UNIT MEMBERS 1,079</b>
		FAMILY MEMBERS PAYING HALF DUES 563